

**The Global Financial Crisis and Equity
Markets in Middle East
Oil Exporting Countries**

Ibrahim Onour

API/WPS 1009

Correspondence

Dr. Ibrahim Onour , The Arab Planning Institute, P.O. Box: 5834 Safat. 13059
Kuwait, Tel: (965) 24843130, Fax: (965) 24842935, E-mail: onour@api.org.kw.

The Global Financial Crisis and Equity Markets in Middle East Oil Exporting Countries

Ibrahim Onour

Abstract

This paper employs extreme downside risk measures to estimate the impact of the global financial crisis in 2008/2009 on equity markets in major oil producing Middle East countries. The results in the paper indicate the spillover effect of the global crisis varied from a country to another, but most hardly affected market among the group of six markets was Dubai financial market in which portfolio loss reached about 42 per cent. This indicates that Dubai debt crisis, which emerged on surface in 2009, exacerbated the impact of the global financial crisis and prolonged the recovery process in these markets.

الأزمة المالية العالمية وأسواق الأسهم الخليجية

ملخص

تهدف الورقة قياس تداعيات الأزمة المالية العالمية على أسواق الأسهم الخليجية وذلك بغية التعرف على مدى انكشاف هذه الأسواق لأي أزمات مالية في المستقبل. توضح نتائج الدراسة بأن آثار الأزمة على أسواق دول الخليج تتفاوت حسب درجة الانفتاح لرؤوس الأموال الأجنبية والمؤثرات المحلية لكل سوق. من أهم العوامل التي عمقت آثار الأزمة المالية على الأسواق الخليجية انخفاض أسعار النفط وأزمة ديون دبي الأمر الذي ساهم في إطالة أمد آثار الأزمة في أسواق دولة الإمارات العربية المتحدة، السعودية، والكويت مقارنة بأسواق الأسهم الأمريكية التي نشأت فيها الأزمة. توضح نتائج البحث أن سوق دبي المالي من أكثر الأسواق الخليجية تأثراً بالأزمة حيث قدرت خسائر المحافظ الاستثمارية فيه بحوالي 42% مقارنة بـ 18% عند أسوأ الأحوال قبل الأزمة. كما أن سوق الكويت أقل الأسواق الخليجية تأثراً بالأزمة من حيث حجم الخسائر المالية، والسوق السعودي يعتبر من أكثر الأسواق الخليجية مخاطر في الأحوال العادية (أي قبل الأزمة)، وسوق مسقط للأوراق المالية أقلهم مخاطر في الظروف العادية.

1. Introduction

Despite financial crises are not a new phenomena, the global financial crisis in 2008/2009 differ from previous crises both in magnitude and globalization. Bartram et al (2009) indicate that by the end of February 2009, global equity market capitalization dropped to \$22 trillion compared to \$51 trillion at October 2007, realizing a drop of 56 per cent. However, the exposure of Middle East capital markets to the global financial crisis was at varying degrees, as some countries responded more stronger than others in the region. Stock markets in Gulf Cooperation Countries (GCC), mainly Saudi Arabia, Kuwait, UAE, and Qatar reacted vigoursly to the downfall of stock markets in developed economies, as these countries held part of their financial wealth in foreign assets particularly in US bonds and other securities¹. In the banking sector, only a few banks in GCC countries have publicly admitted they had losses due the spillover effect of the sub-prime crisis. These losses are believed to have taken the form of credit default risk and structured investment vehicles, and mortgage backed securities, as well as losses related to the sovereign wealth funds. It is becoming evident that the Middle East capital markets in general have overreacted to the events in US capital markets as the impact was quite substantial compared to the economic value of information transmitted to these markets. It is important to realize that the transmission effect of the global financial crisis on GCC capital markets was not limited to the direct effect from the global financial markets, but also included the negative impact of oil price fall from \$120 per oil barrel to about \$70 per barrel after the second half of 2008. Yet, another shock on GCC markets was in October 2009 when Dubai debt crisis came into surface and sent waves of shocks to the markets in the region. Share prices in Dubai financial market suffered their biggest fall amid fears that a debt crisis is looming as Dubai World, a giant conglomerate owned by Dubai government, asked its creditors for a six month debt payment delay. All GCC governments responded to the series of crisis by tightening even further credit at banks.

While the Middle East capital markets in the midst of a massive overhaul, due to increasing links with developed and other emerging markets, it should be admitted that, to my knowledge, no research published so far on the impact of the global financial crisis on the region's capital markets. After the global financial crisis, and its ramification on emerging markets, the issue of risk transmission across capital markets expected to gain momentum and become the subject matter of more research in the coming years.

To assess the impact of the global financial crisis on portfolio returns in major oil producing GCC capital markets, we employed extreme risk measures of value-at-risk (VaR) and expected shortfall (ES). The value-at-risk (VaR) and the expected shortfall methods capture the likelihood of extreme losses that arise from extreme shocks that influence stock returns. VaR is defined as the maximum possible loss to a portfolio (or a security) with a given probability over a certain time horizon. In other words, VaR, reflects the likelihood of incurring a loss from investing in a portfolio over certain period of time, at a pre-specified probability level. However, ES measures the extreme losses that exceed VaR risk value. The major challenge in using VaR and ES approaches constitutes modeling the assets return distribution which is, according to the empirical research, characterized as fat tailed and skewed distribution. In this paper, following recent research papers we estimate VaR and the

Expected Shortfall values using a fat-tail distribution, which is the Generalized Pareto Distribution (GPD). Extreme risk estimates using GPD models gained momentum in the past decade. McNeil (1997, 1998) investigates estimation of extreme risks in financial time series, using Extreme Value Theory (EVT), and Embrechts (1999, 2000a) show robustness of EVT in risk estimates. McNeil and Frey (2000) extend the analysis of extreme risk using heteroskedastic financial time series. Mullar et al (1998), and Pictet et al (1998) study extreme risk in foreign exchange markets using GARCH models. Gencay and Selcuk (2004) investigate the relative performance of VaR models using EVT, in a number of emerging markets after the Asian financial crisis of 1998. Giot and Laurent (2003) model VaR using a number of parametric univariate and multivariate models of ARCH class with skewed Student density. Tsafack (2009) explores VaR and ES on portfolios of U.S and Canadian stocks and bonds.

The remaining parts of the paper includes the following. Section two illustrates descriptive statistic analysis. Section three present the methodology of the research. Section four includes discussion of results. The final section concludes the study.

2. Descriptive statistics

Table (1) present several descriptive statistics on stock returns defined as $\log(p_t / p_{t-1})$, where p_t is the log of daily price index². The sample sizes differ from one market to another, depending on availability of the data at the stock markets' web sites³. The analysis presented in the table display positive mean returns, with skewness towards negative returns for all markets as reflected in the maximum and minimum statistics. The maximum and minimum statistics also reveal the likelihood of making extreme gains despite relatively higher extreme loss possibilities.

The negative skewness coefficients also suport such a possibility. The excess kurtosis coefficients, which exceeds 3 for all markets in the group strongly support the assumption of leptokurtotic (fat-tailedness). To verify this point we included QQ-plots of returns against two thin tailed distributions of the Exponential and Normal distributions. The QQ plots indicate departure of the return quantiles, from the thin tailed Normal distribution for all markets⁴. The Ljung-Box Q-statistics of order 15 on the squared residual series reflect a high serial correlation in the second moments of stock returns for all markets in the group. This support the relevance of the hetroscedasticity assumption in modelling stock returns volatility in GCC markets.

Table (1): Descriptive Statistics

	Kuwait	Saudi	Ab.Dhabi	Dubai	Qatar	Muscat
Mean (%)	0.83E-2	0.29E-2	0.36E-2	0.41E-2	0.43E-2	0.68E-2
St.deviation	0.10	0.22	0.17	0.25	0.20	0.13
minimum	-0.63	-1.15	-1.08	-1.40	-1.12	-0.97
maximum	0.54	1.08	0.96	1.32	1.05	0.90
Jarque-Bera (p-value)*	1684 (0.00)	2133 (0.00)	2005 (0.00)	1219 (0.00)	1461 (0.00)	21125 (0.00)
skewness	-0.25	-0.70	0.18	-0.005	-0.12	-0.38
Ex.kurtosis	4.25	5.45	5.39	4.21	4.77	15.05
$Q^2(15)$ (p-value)*	877 (0.00)	1164 (0.00)	680 (0.00)	931 (0.00)	1050 (0.00)	3233 (0.00)
N	2220	1627	1663	1659	1549	2244

* Significant at 1% significance level. N=number of observations

Notes: $Q^2(15)$ is the Ljung-Box Q-statistic of order 15 on the squared series.

3. Methodology

3.1 VaR and ES

In financial literature, it is widely believed that returns of high frequency data, characterized with fatter tails than the Normal distribution returns. The fat tailedness of stock returns have attracted many researchers to use Extreme Value Theorem (EVT) that underlies the Generalized Pareto Distribution (GPD) model which designed to capture the influence of extreme losses on stock markets risk. The basic assumption underlying EVT is that the tails of every fat tailed distribution converge asymptotically to the tails of Pareto distribution⁵. The estimation of tails in GPD specification can be expressed as:

$$F(x) = [1 - F(u)]G_{\omega,\beta}(x - u) + F(u) \quad (1)$$

Where x is all points of returns above a threshold point, u, so that $x > u$, and $G_{\omega,\beta}(x)$ is the two parameters GPD distribution function:

$$G_{\omega,\beta}(x) = \begin{cases} 1 - (1 + \omega x / \beta)^{-1/\omega} & \omega \neq 0 \\ 1 - e^{(-x/\beta)} & \omega = 0 \end{cases} \quad (2)$$

Where ω is the tail index, and $\beta > 0$ is the scale parameter. Following McNeil (1999), letting $F(u) = \frac{N - n}{N}$, where N is the total sample size, and n is the number of observations above the threshold level, then substituting $G_{\omega,\beta}(x)$ from (2) into equation (1), for $\omega > 0$, the tail estimate can be stated as:

$$\hat{F}(x) = 1 - \frac{n}{N} \left(1 + \hat{\omega} \frac{x - \hat{\mu}}{\hat{\beta}}\right)^{-1/\hat{\omega}} \quad (3)$$

for a given probability q, then VaR estimate is computed by inverting (3) to get:

$$\hat{VaR}_q = u + \frac{\hat{\beta}}{\hat{\omega}} \left\{ \left(\frac{N}{n} (1-q) \right)^{-\hat{\omega}} - 1 \right\} \quad (4)$$

More vigilant determination of the threshold value is deemed necessary for more accurate estimates of GPD parameters. It is important to balance between setting a high threshold value that reduce the sample size to insufficient level, and setting a low threshold level that end up with sizable sample size but with less extreme values in the estimation process.

Given that VaR represents a high quantile of the distribution of losses, i.e., 95th or 99th percentile, it stand for the maximum loss that is only exceeded on a small proportion of occasions.

Artzner, Delbaen, Eber and Heath (1997), have criticized VaR as a measure of risk on the basis that it fails to capture the potential losses that exceeds VaR value. They propose use of Expected Shortfall (ES) as a measure of the expected size of a loss that exceeds VaR. It should be realized that ES complement VaR estimates as it answer the question: When VaR values underestimate risk, what is the size of the expected loss ? Thus, ES is a measure of the likelihood of high unusual loss, or stock market crash. The Expected Shortfall can be estimated as:

$$ES_q = VaR_q + E(X - VaR_q) \mid x > VaR_q \quad (5)$$

Equation (5) can be simplified into (see McNeil (1998)):

$$\hat{ES}_q = \frac{\hat{VaR}}{1 - \hat{\omega}} + \frac{\hat{\beta} - \hat{\omega}u}{1 - \hat{\omega}} \quad (6)$$

McNeil (1998), extend the above analysis to dynamic VaR and dynamic Expected shortfall estimates as in the following:

$$VaR_k^t = u_{t+k} + \sigma_{t+k} VaR(e_t)_q \quad (7)$$

$$ES_k^t = u_{t+k} + \sigma_{t+k} ES(e_t)_q \quad (8)$$

where $k = 1, 2, \dots$

Where $VaR(e_t)_q$ denotes the qth-quantile of a noise variable e_t , and $ES(e_t)_q$ is the corresponding expected shortfall.

4. Results

To compute extreme portfolio losses we fit GPD to the returns of the six stock price indices to generate risk measures of VaR and ES, before and after the global financial crisis in 2008/2009. Like many emerging markets, the Middle East capital markets responded sharply to the crisis by 15/Sept/2008, the day that Lehman investment bank filed for bankruptcy after failing to find a buyer. As a result, in this

study we considered this date as a distinctive date between the pre-crisis and post-crisis epochs. Since we are only interested in the extreme losses we only reported in table (2), the GPD parameters for the lower tails. A fundamental issue in GPD parameters estimation is the threshold value determination. To reduce estimation bias with regard to the threshold value determination in this paper we employed the so-called backtesting criteria⁶. Results in table (2) report the lower tail parameter and the scale parameter. The significance of the lower tail parameters confirm the negative skewness result reported in table (2), and also support the relevance of the Generalized Pareto Distribution in modeling the extreme loss events in GCC markets. In general, significant lower tail parameters imply the likelihood of incurring negative loss when investing in these markets. But to what extent the global financial crisis influenced dynamics of risk in GCC markets? To answer this question we need to divide the sample period into two sub- periods. As indicated in figures 1-3, the response of GCC markets to the global crisis as represented in the sharp downfall of S&P 500 index, started from 15/September/2008, the day when Lehman investment bank announced its bankruptcy. The period from Lehman fall to March/2009 was the crisis period across the global financial markets, including GCC markets. Although most developed and emerging markets started to recover from the crisis by the end of first quarter of 2009, the spillover effect of the crisis on GCC markets, continued till the end of 2009. There were two events contributed to such sluggish recovery process of GCC markets during this period. One of these events was crude oil price fall from \$120 per oil barrel before the crisis to about \$70 per barrel through the whole period after the crisis. The other event, which even more important than the oil market effect, was Dubai debt crisis in 2009, which sent waves of shocks to the markets in the region. Both these events are linked with the global crisis in away, or another, therefore they cannot be considered as separate crisis. Thus, taking the date of Lehman investment bank failure (15/August/2008) as a distinctive date between pre and post crisis sample periods, results in table (3) present VaR and ES values for each of the two eras,. Estimated risk values of VaR and ES indicate the percentage of a portfolio value that can be lost when an asset held for a single day with a probability of 5 percent (or 95% confidence level)⁷. Both risk measures indicate the impact on GCC markets differ from one market to another, reflecting differences in the degree of openness of each capital market to international capital markets and foreign investments. Based on the expected shortfall (ES) values, it is evident that Dubai financial market was the most affected by the global financial crisis as portfolio losses increased from 18 percent at the pre-crisis era to 42 per cent at the post-crisis period. It is not a surprise to have such high level of risk for Dubai financial market which also hardly hit by Dubai debt crisis in October 2009. Share prices in Dubai financial market plummeted amid fears that Dubai World, a giant conglomerate owned by Dubai government, asked its creditors for debt rescheduling. It is also indicated in the table, in the normal situations (before the crisis) Saudi market is the riskiest in the group, as portfolio loss can reach up to 16 per cent in every 20 days (VaR at 5% significance level). However, Kuwait stock market is the least affected by the global crisis and Muscat market is the least riskier in the normal situations.

The backtesting results in table (3), indicate for most cases the violation rates are within the acceptable 5% tolerance level, and still less than 10% tolerance level. The backtesting criteria compares out-sample forecast VaR values with the actual loss values from the data and compute the percentage of the actual losses that exceed the estimated forecast VaR values in every 100 trading days. If the number of failures (or

violations) exceed the significance level, then the model under estimates VaR values, and the opposite is correct when the number of violations is significantly smaller than the expected level. In general, the ideal model yield estimates of failure rates close to stipulated significance level to pass the back-testing criteria.

Table (2): Parameters of GPD

	$\hat{\omega}_L$	$\hat{\beta}$
Kuwait (t-ratio)	0.50 (4.76)*	0.15E-3 (0.05)
Saudi (t-ratio)	0.47 (2.91)*	0.78E-3 (0.07)
Dubai (t-ratio)	0.43 (3.11)*	0.52E-3 (0.04)
Abu-Dhabi (t-ratio)	0.53 (6.12)*	0.86E-4 (0.03)
Qatar (t-ratio)	0.44 (2.25)**	0.8E-3 (0.04)
Muscat (t-ratio)	0.55 (7.97)	0.55E-3 (0.19)

*significant at 5% significance level.

** significant at 10% sig.level

Note: $\hat{\omega}_L$ is lower tail, and $\hat{\beta}$ is the scale parameter.

Table (3): Risk estimates

	VaR	ES	Back testing	
			VaR	ES
<u>Kuwait</u>				
Pre-crisis	0.074	0.127	0.04	0.02
Post-crisis	0.113	0.162	0.08	0.06
<u>Saudi</u>				
Pre-crisis	0.16	0.23	0.03	0.03
Post-crisis	0.19	0.27	0.03	0.02
<u>Dubai</u>				
Pre-crisis	0.138	0.187	0.05	0.03
Post-crisis	0.315	0.422	0.06	0.06
<u>Abu-Dhabi</u>				
Pre-crisis	0.10	0.164	0.06	0.03
Post-crisis	0.185	0.242	0.08	0.07
<u>Qatar</u>				
Pre-crisis	0.124	0.195	0.06	0.04
Post-crisis	0.211	0.299	0.06	0.05
<u>Muscat</u>				
Pre-crisis	0.06	0.112	0.04	0.02
Post-crisis	0.17	0.250	0.06	0.05

Note1: VaR and ES values estimated using nonlinear MLE method. Numbers in the back-testing columns indicate the percentage of the actual losses that exceed estimated VaR and ES values, at significance level of 0.05.

Note2: 15/Sept/2008, the day that Lehman filed for bankruptcy, is taken as the date of the crisis eruption.

5. Concluding remarks

Taking into account empirical regularities of fat-tailedness and skewness that characterize asset returns in emerging markets, in this paper we modeled the impact of the global financial crisis in 2008/2009 on capital markets of the major oil producing Gulf Cooperation Council (GCC) countries. Our findings indicate the increasing openness of GCC capital markets to foreign investments and vulnerability to crude oil market shocks, exacerbated exposure of GCC capital markets to external shocks. To assess the impact of the global crisis on GCC markets we estimated extreme risk values of VaR and ES before and after Lehman investment bank failure at (15/August/2008). Both risk measures indicate the impact on GCC capital markets differ from one market to another, reflecting the degree of openness and type and nature of the internal factors characterizing each market. Based on the expected shortfall (ES) values it is clear that Dubai financial market was the most affected by the global crisis, as portfolio loss jumped from 18 percent at the pre-crisis period to 42 per cent at the post-crisis period. It is not a surprise to come up with such high level of risk for Dubai financial market which hardly hit in October 2009, by Dubai debt crisis⁸. Share prices in Dubai financial market plummeted amid fears that Dubai World, a giant conglomerate owned by Dubai government, asked its creditors for a six month debt payment delay. In the normal situations (before the crisis) Saudi market is the highest in term of risk level, as portfolio loss can reach up to 16 per cent in every 20 days (VaR at 5% significance level). However, Kuwait stock market is the least affected by the global crisis in the group, whereas Muscat market is the least riskier in the normal situations.

Footnotes

- ¹ GCC markets responded sharply to the crisis by 15/Sept/2008, the day that Lehman filed for bankruptcy after failing to find a buyer.
- ² The stock returns, as defined here, is not a total market return since dividends are not included. However, in empirical work on the S&P 500 index, by Gallant, Rossi, and Tauchen (1992) indicate results are invariant to inclusion or exclusion of dividends in stock returns.
- ³ Stock indices extracted from the web sites of stock markets. The sample period for Saudi, Qatar, Dubai, and Abu-Dhabi markets extend from Jan/1/2004 to Feb/23/2010, for Muscat from Feb/1/2001 to Feb/23/2010, and for Kuwait from June/17/2001 to Feb/21/2010.
- ⁴ If the data is from an exponential distribution, the points on the graph would lie along positively sloped straight line. If there is a concave presence, it is an indication that of fat-tailed distribution, whereas a convex shape indicates short-tailed distribution.
- ⁵ In this paper we apply the "Peaks – Over – Threshold" (POT) model following McNeil and Frey, (2000). The POT model is based on the "Pickands – Balkema-de Haan Theorem" which state that the distribution of observations in excess of certain high threshold can be approximated by a Generalized Pareto Distribution (GPD).
- ⁶ Some authors fit the GPD under different threshold values to assess their relative goodness of fit using the QQ plots. In the case of a good fit for GPD, the QQ plots expected to exhibit straight line tails.
- ⁷ Commonly used significance levels are 1%, and 5%, . For example, BIS sets VaR values using significance level at 5% and holding period for 10 days when measuring the adequacy of banks capital. However, J.P.Morgan computes its daily VaR at significance level of 5%, with one day holding period, and Bankers Trust discloses its daily VaR at 1% significance level.
- ⁸ Dubai debt crisis should not be viewed as independent from the Global financial crisis.

References

- Artzner, P., Delbaen, F., and Heath D., (1997) "Thinking Coherently" Risk, 10(11), pp.68-71.
- Bartram, S., and Bodnar G., (2009) "No Place to Hide: The Global Crisis in Equity Markets in 2008/2009" Journal of International Money and Finance, 28, pp.1246-1292.
- Brooks, R., Faff, R. and Aritt, M., (1998) "An Investigation into the Extent of Beta Instability in the Singapore Stock Market" Pacific Basin Finance Journal, Vol.6, pp.87-101.
- Diebold, F., and Mariano, R., (1995) "Comparing Predictive Accuracy" Journal of Business and Economic Statistics, Vol.13, No.3, pp. 253-263.
- Danielsson J., and de Vries, C., (1997) "Tail Index and Quantile Estimation with very High Frequency data" Journal of Empirical Finance, 4, pp.241-257.
- Elsas, R., EL-Shaer M., and Theissen E., (2003) "Beta and Returns Revisited-Evidence from the German Stock Market" Journal of International Financial Markets, Institutions and money, Vol.13, pp. 1-18.
- Embrechts, P., Kluppelberg C., and Mikosch T., (1997) "Modelling Extreme Events for Insurance and Finance" Berlin: Springer.
- Embrechts P., (1999) "Extreme Value Theory in Finance and Insurance", Manuscript, Zurich, Switzerland: Department of Mathematics, ETH, Swiss Federal Technical University.
- Embrechts P., (2000a) "Extreme Value Theory: Potentials and Limitations as an Integrated Risk Management Tool. Manuscript, Zurich, Switzerland: Department of Mathematics, ETH, Swiss Federal Technical University.
- Engle, R., and Ng, V., (1993) "Measuring and Testing The Impact of News on Volatility" The Journal of Finance, Vol.48, pp. 1749-1778.
- Hansen, B., (1994) "Autoregressive Conditional Density Estimation" International Economic Review, Vol. 35, No.3, pp.705-730.
- Harvey, C., and Siddique, A., (1999) "Autoregressive Conditional Skewness" Journal of Financial and Quantitative Analysis, Vol.34, pp.465-487.
- Glosten, L., Jagannathan, R., and Runckle, D., (1993) "On the Relation Between The Expected Value and the Volatility of the Nominal Excess Return on Stocks" Journal of Finance, Vol.48, pp. 1779-1802.
- Gencay R., and Selcuk, F., (2004) "Extreme Value Theory and Value-at-Risk: Relative Performance in Emerging Markets" International Journal of Forecasting, 20, pp.287-303.

Giot P., Laurent S., (2003) “ Value-at-Risk for Long and Short Trading Positions” Journal of Applied Econometrics, 18, pp.641 – 664.

Hill, B., (1975) “ A Simple General Approach to Inference About the Tail of a Distribution” Annals of Statistics, 3, pp.1163 – 1174.

Ho, Y-W, and Piesse J., (2006) "On the Conditional Pricing Effects of Beta, Size and Book-to-Market Equity in the Hong Kong Market" The Journal of International Financial Markets, Institutions and Money, Vol.16, pp.199-214.

Faff, R., Hillier, D., and Hillier, J., (2000) “Time Varying Beta Risk: An Analysis of Alternative Modelling Techniques” Journal of Business Finance and Accounting, Vol.27, pp.523-554.

Fama, E., and French, K., (1992) “The Cross-Section of Expected Stock Returns” Journal of Finance, Vol.47, No.2, pp.427-465.

Fama, E., and French, K., (1993) “Common Risk Factors in the Returns on Stocks and Bonds” Journal of Financial Economics, Vol.33, No.1, pp.3-56.

Fama, E., and French, K., (1995) “Size and Book-to-Market Factors in Earnings and Returns” Journal of Finance, Vol. 50, No.1, pp.131-155.

Fama, E., and French, K., (1996) “Multifactor Explanations of Asset Pricing Anomalies” Journal of Finance, Vol. 51, No.1, pp.55-84.

Fama, E., and French, K., (1997) “Industry Costs of Equity” Journal of Financial Economics, Vol.43, No.2, pp.153-193.

Fraser P., Hamelink M., and McGregor B., (2004) "Time-varying Betas and Cross-sectional Returns: Evidence From the UK" European Journal of Finance, Vol.10, pp. 255-76.

Jondeau, E., and Rockinger, M., (2000) “Conditional Volatility, Skewness and Kurtosis: Existence and Persistence” Working Paper, HEC School of Management.

Kanwer, A., (2006) “Exploring Time Variation in Betas in Pakistan” Manuscript, International Middle East Economic Association Conference, Dubai, UAE

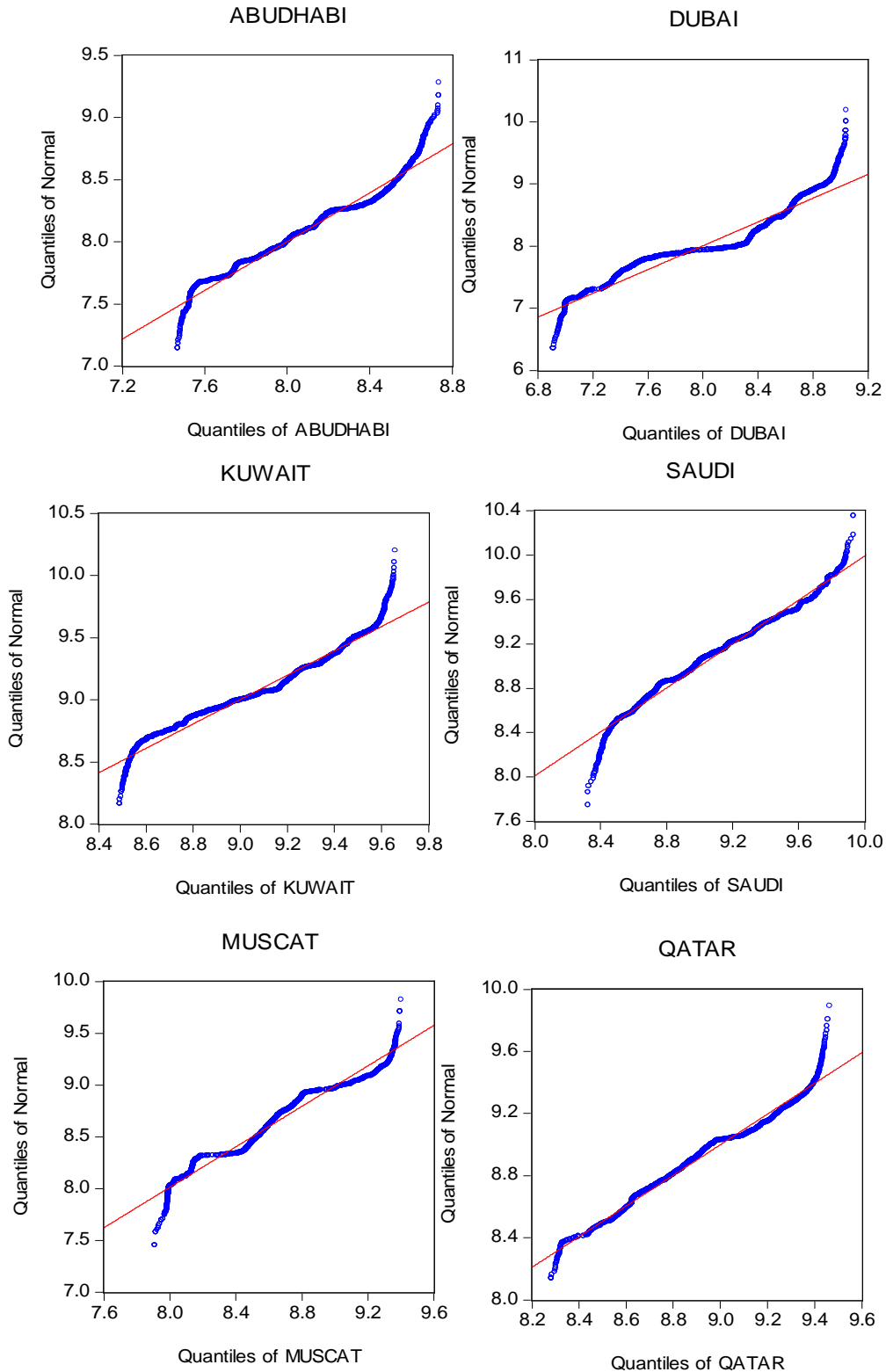
Kupiec, P. (1995) “Techniques for Verifying the Accuracy of Risk Measurement Models” Journal of Derivatives, 2, pp.174 -184.

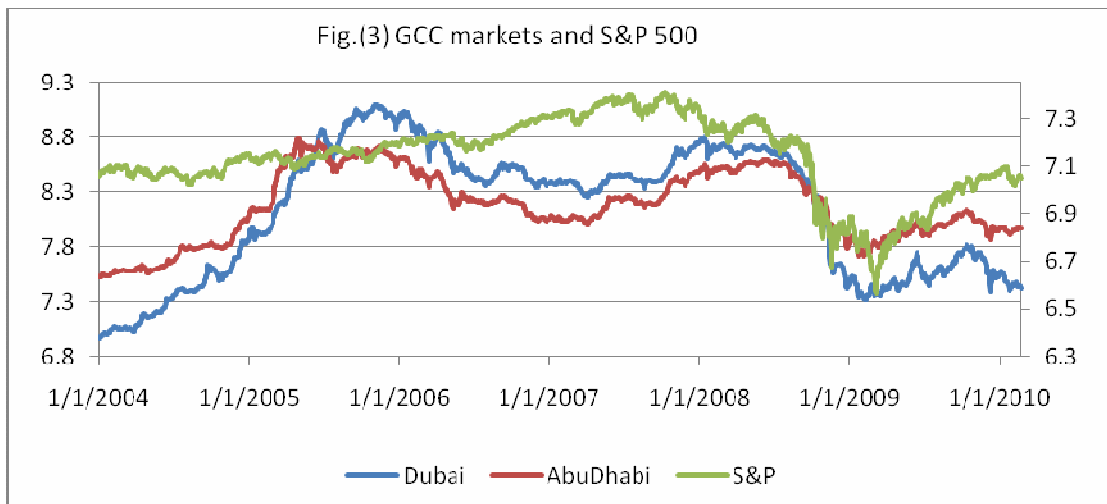
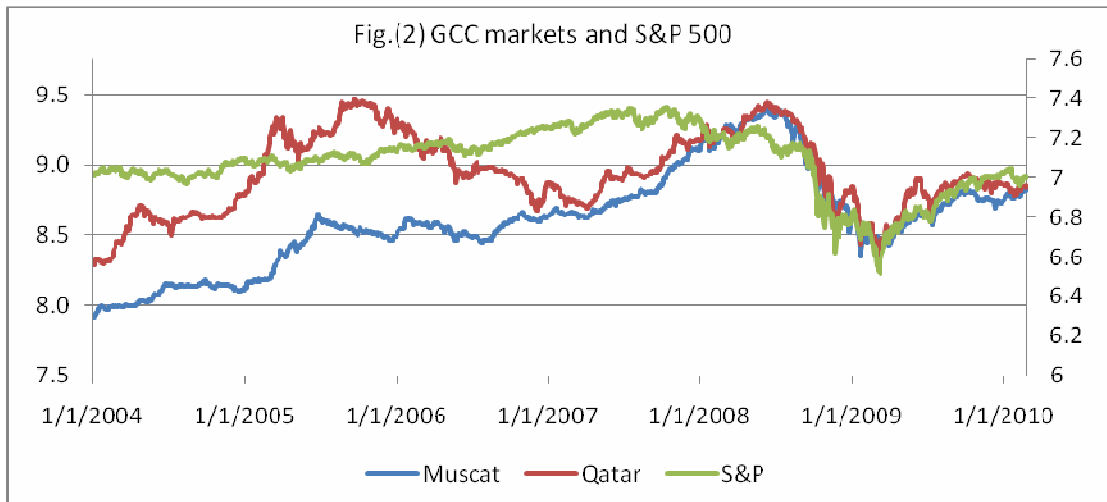
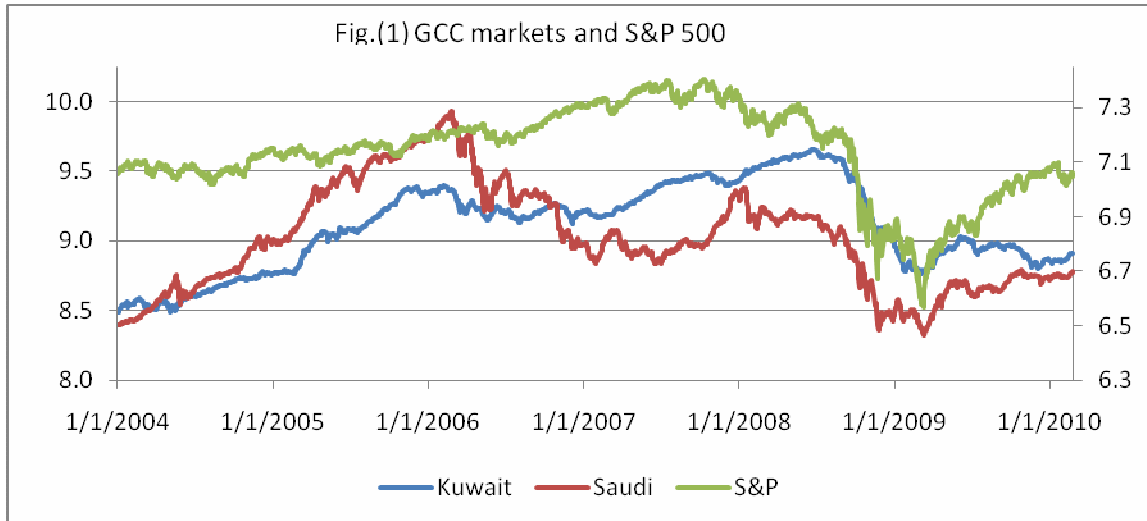
Lie, F., Brooks, R., and Faff, R., (2000) “Modelling the Equity Beta Risk of Australian Financial Sector Companies” Australian Economic Papers, Vol.39, pp.301-311.

McKenzie, M., Brooks R., and Faff, R. and Ho Y. (2000) “Exploring the Economic Rationale of Extremes in GARCH Generated Betas: The Case of U.S., Banks.” The Quarterly Review of Economics and Finance, Vol.40, pp. 85-106.

- Moonis, S., Shah, A. (2003) "Testing for Time Variation in Beta in India" *Journal of Emerging Markets Finance*, Vol.2, No.2, pp.163-180.
- McNeil A., (1997) "Estimating The Tails of Loss Severity Distributions Using Extreme Value Theory" *ASTIN Bulletin*, 27, pp.1117 -1137.
- McNeil A., (1998) "Calculating Quantile Risk Measures for Financial Time Series Using Extreme Value Theory" Manuscript, Zurich, Switzerland, Department of Mathematics, ETH, Swiss Federal Technical University.
- McNeil A., and Frey R., (2000) "Estimation of Tail-Related Risk Measures for Heteroscedastic Financial Time Series: An Extreme Value Approach" *Journal of Empirical Finance*, 7, pp.271 – 300.
- Muller U., Dacorogna M., and Pictet O., (1998) "Heavy Tails in High Frequency Financial Data, in R.J. Adler, R. E. Feldman and M.S. Tagg (Eds), *A Practical Guide to Heavy Tails: Statistical Techniques and Applications*, (pages 55-77), Boston: Birkhauser.
- Pictet O., Dacorogna M., and Muller U., (1998) "Hill, Bootstrap and Jackknife estimators for Heavy Tails" In Taqqu, M., (Ed.), *A Practical Guide to Heavy Tails: Statistical Techniques and Applications* (pp.283-310). Boston, MA: Birkhauser.
- Patton, A., (2004) "On the Out-of-Sample Importance of Skewness and Asymmetric Dependence for Asset Collection" *Journal of Financial Econometrics*, Vol.2, No.1, pp. 130 –168.
- Tsafack G. (fall 2009) "Asymmetric Dependence Implications for Extreme Risk Management" *The Journal of Derivatives*, Vol.17, No.1, pp.7-20.
- Yu, J., (2002) "Forecasting Volatility in The New Zealand Stock Market" *Applied Financial Economics*, Vol.12, pp.193-202.
- Whister, D., and White, K., (2004) :Shazam Software, and Users Reference Manual, Version 10, Northwest Econometrics Ltd.
- Zakoian, J., and Rabemananjara, R.,(1993) "Threshold ARCH Models and Asymmetries in Volatility" *Journal of Applied Econometrics*, Vol. 8, pp. 31-49.

Plots (A) QQ-plots against the Normal distribution





Previous Publications

No	Author	Title
API/WPS 9701	جميل طاهر	النفط والتنمية المستدامة في الأقطار العربية : الفرص والتحديات
API/WPS 9702	Riad Dahel	Project Financing and Risk Analysis
API/WPS 9801	Imed Limam	A SOCIO-ECONOMIC TAXONOMY OF ARAB COUNTRIES
API/WPS 9802	محمد عدنان وديع بلقاسم العباس	منظومات المعلومات لأسواق العمل لخليجية
API/WPS 9803	Adil Abdalla	The Impact of Euro-Mediterranean Partnerships on Trade Interests of the OIC Countries
API/WPS 9804	رياض دهال حسن الحاج	حول طرق الخصخصة
API/WPS 9805	Ujjayant Chakravorty Fereidun Fesharaki Shuoying Zhou	DOMESTIC DEMAND FOR PETROLEUM PRODUCTS IN OPEC
API/WPS 9806	Imed Limam Adil Abdalla	Inter-Arab Trade and the Potential Success of AFTA
API/WPS 9901	Karima Aly Korayem	Priorities of Social Policy Measures and the Interest of Low-Income People; the Egyptian Case
API/WPS 9902	Sami Bibi	A Welfare Analysis of the Price System Reforms' Effects on Poverty in Tunisia
API/WPS 9903	Samy Ben Naceur Mohamed Goaid	The Value Creation Process in The Tunisia Stock Exchange
API/WPS 9904	نجاح النيش	تكاليف التدهور البيئي وشحة الموارد الطبيعية: بين النظرية وقابلية التطبيق في الدول العربية
API/WPS 9905	Riad Dahel	Volatility in Arab Stock Markets
API/WPS 9906	Yousef Al-Ebraheem Bassim Shebeb	IMPORTED INTERMEDIATE INPUTS: IMPACT ON ECONOMIC GROWTH
API/WPS 9907	Magda Kandil	Determinants and Implications of Asymmetric Fluctuations: Empirical Evidence and Policy Implications Across MENA Countries
API/WPS 9908	M. Nagy Eltony	Oil Price Fluctuations and their Impact on the Macroeconomic Variables of Kuwait: A Case Study Using a VAR Model
API/WPS 9909	علي عبد القادر	إعادة رؤوس الأموال العربية إلى الوطن العربي بين الأمان والواقع
API/WPS 0001	محمد عدنان وديع	التنمية البشرية ، تنمية الموارد البشرية والإحلال في الدول الخليجية
API/WPS 0002	محمد ناجي التوني	برامج الأقساط : بعض التجارب العربية
API/WPS 0003	Riad Dahel	On the Predictability of Currency Crises: The Use of Indicators in the Case of Arab Countries
API/WPS 0004	نسرين بركات عادل العلي	مفهوم التنافسية والتجارب الناجحة في النفاذ إلى الأسواق الدولية

No	Author	Title
API/WPS 0101	Imed Limam	Measuring Technical Efficiency Of Kuwaiti Banks
API/WPS 0102	Ali Abdel Gadir Ali	Internal Sustainability And Economic Growth In The Arab States
API/WPS 0103	Belkacem Laabas	Poverty Dynamics In Algeria
API/WPS 0104	محمد عدنان وديع	التعليم وسوق العمل : ضرورات الاصلاح - حالة الكويت
API/WPS 0105	محمد ناجي التوني	دور وآفاق القطاع السياحي في اقتصادات الأقطار العربية
API/WPS 0106	نجاة النيش	الطاقة والبيئة والتنمية المستدامة : آفاق ومستجدات
API/WPS 0107	Riad Dahel	Telecommunications Privatization in Arab Countries: An Overview
API/WPS 0108	علي عبد القادر	أسس العلاقة بين التعليم وسوق العمل وقياس عوائد الاستثمار البشري
API/WPS 0201	أحمد الكواز	مناهج تقدير المداخل المختلفة في الأقطار العربية
API/WPS 0202	سليمان شعبان القدسي	الكفاءة التوزيعية لشبكات التكافل الاجتماعي في الاقتصاد العربي
API/WPS 0203	Belkacem Laabas and Imed Limam	Are GCC Countries Ready for Currency Union?
API/WPS 0204	محمد ناجي التوني	سياسات العمل والتنمية البشرية في الأقطار العربية : تحليل للتجربة الكويتية
API/WPS 0205	Mustafa Babiker	Taxation and Labor Supply Decisions: The Implications of Human Capital Accumulation
API/WPS 0206	Ibrahim A. Elbadawi	Reviving Growth in the Arab World
API/WPS 0207	M. Nagy Eltony	The Determinants of Tax Effort in Arab Countries
API/WPS 0208	أحمد الكواز	السياسات الاقتصادية ورأس المال البشري
API/WPS 0209	Mustafa Babiker	The Impact of Environmental Regulations on Exports: A Case Study of Kuwait Chemical and Petrochemical Industry
API/WPS 0301	Samir Makdisi, Zeki Fattah and Imed Limam	Determinants Of Growth In The Mena Countries
API/WPS 0302	طارق نوير	دور الحكومة الداعم للتنافسية "حالة مصر"
API/WPS 0303	M. Nagy Eltony	Quantitative Measures of Financial Sector Reform in the Arab Countries
API/WPS 0304	Ali Abdel Gadir Ali	Can the Sudan Reduce Poverty by Half by the Year 2015?
API/WPS 0305	Ali Abdel Gadir Ali	Conflict Resolution and Wealth Sharing in Sudan: Towards an Allocation Formula
API/WPS 0306	Mustafa Babiker	Environment and Development in Arab Countries: Economic Impacts of Climate Change Policies in the GCC Region
API/WPS 0307	Ali Abdel Gadir Ali	Globalization and Inequality in the Arab Region
API/WPS 0308	علي عبد القادر علي	تقييم سياسات وإستراتيجيات الإقلال من الفقر في عينة من الدول العربية

No	Author	Title
API/WPS 0401	Belkacem Laabas and Imed Limam	Impact of Public Policies on Poverty, Income Distribution and Growth
API/WPS 0402	Ali Abdel Gadir Ali	Poverty in the Arab Region: A Selective Review
API/WPS 0403	Mustafa Babiker	Impacts of Public Policy on Poverty in Arab Countries: Review of the CGE Literature
API/WPS 0404	Ali Abdel Gadir Ali	On Financing Post-Conflict Development in Sudan
API/WPS 0501	Ali Abdel Gadir Ali	On the Challenges of Economic Development in Post-Conflict Sudan
API/WPS 0601	Ali Abdel Gadir Ali	Growth, Poverty and Institutions: Is there a Missing Link?
API/WPS 0602	Ali Abdel Gadir Ali	On Human Capital in Post-Conflict Sudan: Some Exploratory Results
API/WPS 0603	Ahmad Telfah	Optimal Asset Allocation in Stochastic Environment: Evidence on the Horizon and Hedging Effects
API/WPS 0604	Ahmad Telfah	Do Financial Planners Take Financial Crashes In Their Advice: Dynamic Asset Allocation under Thick Tails and Fast volatility Updating
API/WPS 0701	Ali Abdel Gadir Ali	Child Poverty: Concept and Measurement
API/WPS 0702	حاتم مهران	التضخم في دول مجلس التعاون الخليجي ودور صناديق النفط في الاستقرار الاقتصادي
API/WPS 0801	Weshah Razzak	In the Middle of the Heat The GCC Countries Between Rising Oil Prices and the Sliding Greenback
API/WPS 0802	Rabie Nasser	Could New Growth Cross-Country Empirics Explain the Single Country Growth of Syria During 1965-2004?
API/WPS 0803	Sufian Eltayeb Mohamed	Finance-Growth Nexus in Sudan: Empirical Assessment Based on an Application of the Autoregressive Distributed Lag (ARDL) Model
API/WPS 0804	Weshah Razzak	Self Selection versus Learning-by-Exporting Four Arab Economies
API/WPS 0805	رشا مصطفى	اتفاقية أغانير: نحو بيئة أعمال أفضل
API/WPS 0806	Mohamed Osman Suliman & Mahmoud Sami Nabi	Unemployment and Labor Market Institutions: Theory and Evidence from the GCC
API/WPS 0901	Weshah Razzak & Rabie Nasser	A Nonparametric Approach to Evaluating Inflation-Targeting Regimes
API/WPS 0902	Ali Abdel Gadir Ali	A Note on Economic Insecurity in the Arab Countries
API/WPS 0903	وشاح رزاق	الأزمة المالية الحالية
API/WPS 0904	Ali Abdel Gadir Ali	The Political Economy of Inequality in the Arab Region and Relevant Development Policies
API/WPS 0905	Belkacem Laabas Walid Abdmoula	Determinants of Arab Intra-regional Foreign Direct Investments

No	Author	Title
API/WPS 0906	Ibrahim Onour	North Africa Stock Markets: Analysis of Unit Root and Long Memory Process
API/WPS 0907	Walid Abdmoulah	Testing the Evolving Efficiency of 11 Arab Stock Markets
API/WPS 0908	Ibrahim Onour	Financial Integration of North Africa Stock Markets
API/WPS 0909	Weshah Razzak	An Empirical Glimpse on MSEs Four MENA Countries
API/WPS 0910	Weshah Razzak	On the GCC Currency Union
API/WPS 0911	Ibrahim Onour	Extreme Risk and Fat-tails Distribution Model: Empirical Analysis
API/WPS 0912	Elmostafa Bentour Weshah Razzak	Real Interest Rates, Bubbles and Monetary Policy in the GCC countries
API/WPS 1001	Ibrahim Onour	Is the high crude oil prices cause the soaring global food prices?
API/WPS 1002	Ibrahim Onour	Exploring Stability of Systematic Risk: Sectoral Portfolio Analysis
API/WPS 1003	علي عبدالقادر علي	ملاحظات حول تحديات الأمن الاقتصادي في الدول العربية
API/WPS 1004	أحمد الكواز	بعض مفاهيم التدريب مع إشارة للمعالجة النظرية الاقتصادية
API/WPS 1005	بلقاسم العباس وشاح رزاق	Taxes, Natural Resource Endowment, and the Supply of Labor: New Evidence.
API/WPS 1006	رياض بن جليلي عادل عبدالعظيم	Tourism in Arab South Mediterranean Countries: The Competitiveness Challenge
API/WPS 1007	Riadh Ben Jelili	Conventional and Corrected Measures of Gender-related Development Index (GDI): What Happens to the Arab Countries Ranking?
API/WPS 1008	أحمد الكواز	هيكل وتحديات التجارة الخارجية في دولة الإمارات العربية المتحدة